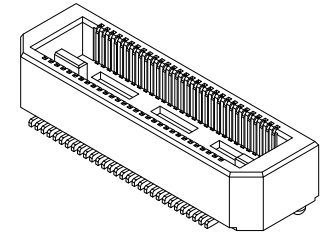
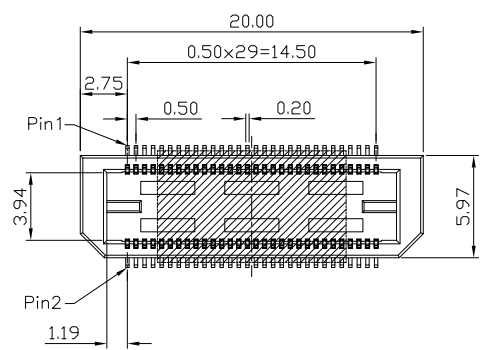
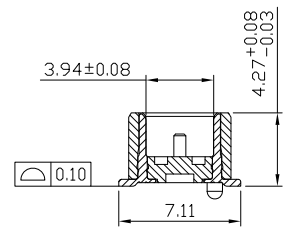
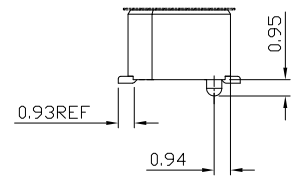
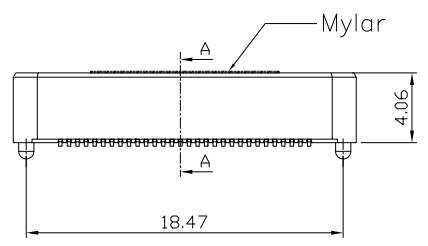


REV.	SPECIFICATION	ECN NO.	APPD.
X3			

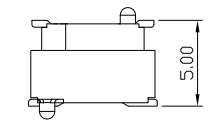


Material and Plating:
Housing: LCP, UL94V-0, Black.
Signal Contacts: Phosphor Bronze.
Gold Plated on Contact Area and 80u" Min Tin Plated on Solder Tail over nickel 50u" Min.
Lock: Brass
80u" Min Tin Plated over nickel 50u" Min.

Electrical Characteristics:
Current Rating: Signal: 3A Per Contact With 3 Adjacent Contacts (UL).
Voltage Rating: 125V AC.
Dielectric Withstanding Voltage: 525V AC For 1 minute.
Insulator Resistance: 5000MΩ min at DC 500V.
Contact Resistance: 45mΩ max.
Operating Temperature: -55°C ~ +125°C.
***RoHS Compliant**

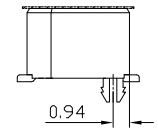
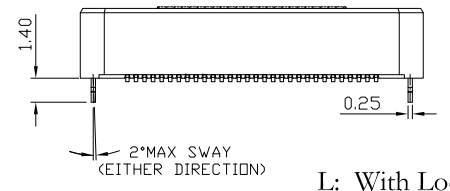


Sectional A-A
Scale 1:1



Mating Height

P: With Post Option Shown



L: With Lock Option Shown

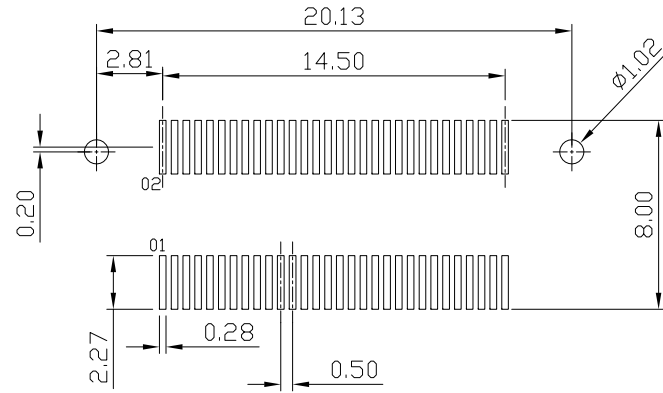
2336- 60 M C 3 D P 1 T -S

Series ————
Position ————
M: Male ————
C: Selective Gold Plated ————
1: G/F ————
3: 10μ" ————
7: 30μ" ————

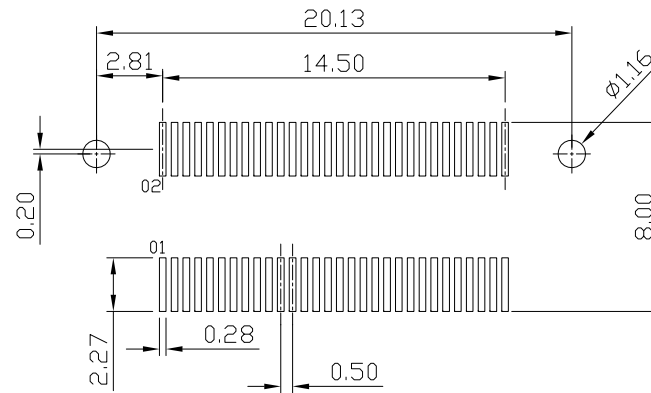
S: Mylar
T: Tape & Reel Package
1: Code 1
N: W/O Post, W/O Lock
P: With Post, W/O Lock
L: W/O Post, With Lock
D: SMD Type

Tolerances	Dwg. No.	2336-D0000-002	Title:		2336 Series	OUPIN OUPIN ELECTRONIC(KUNSHAN) CO., LTD.
x = ±0.5	Projection		High Speed Board to Board		P/N: 2336-60MC3DP1T-S	
.x = ±0.25	Unit	mm	Scale	1:1	SHEET	1/2
.xx = ±0.15	Drawn By	WP 10/08'22	Pitch 0.5mm (Plug)		Ver.No.	X3


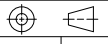
REV.	SPECIFICATION	ECN NO.	APPD.
X3			



P.C.Board Layout For P Options
(Tolerance:±0.05)



P.C.Board Layout For L Options
(Tolerance:±0.05)

Tolerances	Dwg. No.	2336-D0000-002		Title: 2336 Series		 OUPIIN ELECTRONIC(KUNSHAN) CO., LTD.			
x = ±0.5	Projection			High Speed Board to Board					
.x = ±0.25	Unit	mm	Scale	1:1		P/N: 2336-60MC3DP1T-S			
.xx = ±0.15	Drawn By	WP 10/08'22		Pitch 0.5mm (Plug)		SHEET	2/2	Ver.No.	X3